

创 新 合 作 共 赢 发 展

创新引领科技 科技改变世界

Innovation leads technology and changes the world

IMCB

IMCB(SHANDONG)BEARING CO.,LTD.

艾姆肯(山东)轴承有限公司



微信/WeChat



WhatsApp

Afra 0086-135 8118 0002

地址 / 中国山东省临清市烟店工业园区
Add / yandian industrial park, linqing city, shandong province ,china

网址Web site / www.cbbearing.com

邮箱E-mail / cbbearing@hotmail.com

邮箱E-mail / cbbearing@outlook.com

IMCB

Bearing world
HIGH TECH

创新引领科技 科技改变世界
Innovation leads technology and changes the world

IMCB(SHANDONG)BEARING CO.,LTD.
艾姆肯(山东)轴承有限公司

>>> www.cbbearing.com



**Bearing world
HIGH TECH**

IMCB 公司简介 COMPANY PROFILE

艾姆肯（山东）轴承有限公司位于山东省聊城市，是一家专注研究轴承及轴承配件的生产和销售的制造商。企业创始于1999年，拥有三个生产基地。山东生产基地主要生产中小型轴承，瓦房店生产基地主要生产重工业轧机轴承和大型轴承，杭州生产基地主要生产高精密轴承和轮毂单元轴承。

我们拥有二十多年的轴承生产和销售经验，公司凭借轴承专业知识和对外贸易，提供OEM服务和非标定制解决方案。我们的产品广泛应用于汽车、摩托车、工程机械、印刷机械、运动器械、办公设备、仪器仪表、钢铁等领域。我们的产品远销欧洲、南美、拉美、亚洲、中东等地区。

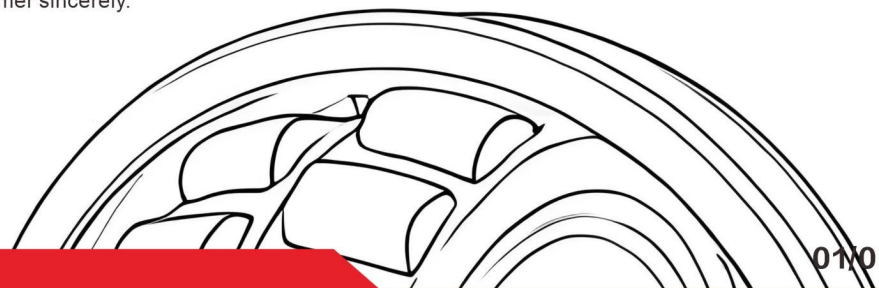
我们坚持以优质的产品，合理的价格，满意的服务，努力成为您最信赖的轴承供应商。我们始终坚信，客户是我们企业发展的良师益友，愿与客户共成长，共发展。我们将在以后的工作中，更加努力诚心的服务于每一位客户。



IMCB (Shandong) Bearing Co., Ltd. is located in Liaocheng City, Shandong Province. It is a manufacturer specializing in the research, production and sales of bearings and bearing parts. We were founded in 1999 and has three production bases. The Shandong production base mainly produces small and medium-sized bearings. The Wafangdian production base mainly produces heavy industry mill bearings and large bearings. The Hangzhou production base mainly produces high-precision bearings and Wheel Hub bearings.

We have over twenty years of experience in bearing production and sales. Relying on our professional knowledge of bearings and export trade, our company provides OEM services and non-standard customization solutions. Our products are widely used in automobiles, motorcycles, construction machinery, printing machinery, sports equipment, office equipment, instruments and meters, steel and other fields. Our products are exported to Europe, South America, Latin America, Asia, the Middle East and other regions.

We adhere to providing high-quality products, reasonable prices and satisfactory services, striving to become your most trustworthy bearing supplier. We always firmly believe that customers are good teachers and helpful friends for the development of our enterprise. We are willing to grow and develop together with our customers. In our future work, we will make more efforts to serve each customer sincerely.



生产流程
Production Process

01	锻造 Forging
02	球化退火 Spheroidizing Annealing
03	车工 Turning
04	淬火 Quenching
05	平面&外圆磨 Surface Grinding & Cylindrical Grinding
06	沟道磨 Groove Grinding
07	超精 Superfinishing
08	装配 Assembling
09	检测 Inspection
10	包装 Packaging
11	出库 Ex-warehouse





测长仪 Length Measuring Instrument



轮廓仪 Profilometer



金相试样抛光机 Metallographic Sample Polishing Machine



轴承圆度仪 Bearing Roundness Meter

技术检测

TECHNICAL INSPECTION

产品质量，无疑是企业赖以生存和发展的基石。艾姆肯(山东)轴承有限公司始终坚守这一理念，致力于为全球用户打造卓越品质的产品。

为实现这一目标，我们配备了各种先进、齐全的精密检测仪器，确保从源头上把控产品质量。同时，我们拥有一支高水平的质量检测团队，他们严谨细致、技艺精湛，严格按照完善且严格的质量检测流程进行操作，确保每一个细节都符合质量标准。

我们严格遵循ISO9001国际质量标准，从原材料的采购到产品的生产、检测、包装，每一个环节都经过严格的把控，确保送到用户手中的每一套产品都是经过精心打造、品质卓越的合格产品。

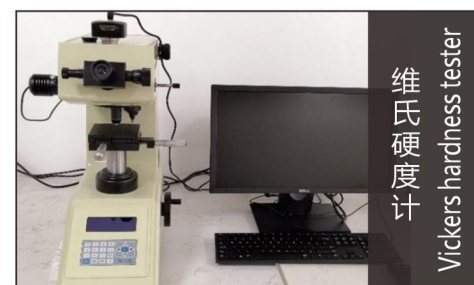
Product quality is undoubtedly the cornerstone of the survival and development of enterprises. IMCB (Shandong) Bearing Co., Ltd. always adheres to this concept and is committed to creating excellent quality products for global users.

In order to achieve this goal, we are equipped with a variety of advanced and complete precision testing instruments to ensure that product quality is controlled from the source. At the same time, we have a high-level quality inspection team, they are rigorous, meticulous and skilled, in strict accordance with the perfect and strict quality inspection process to ensure that every detail is in line with the quality standards.

We strictly follow the ISO9001 international quality standards, from the procurement of raw materials to the production, testing, packaging, every link is strictly controlled, to ensure that each set of products sent to the hands of users are carefully built, excellent quality qualified products.



轴承振动测试仪
Bearing vibration tester



维氏硬度计
Vickers hardness tester



金相组织显微镜
Metallographic tissue microscope

Deep groove ball bearings 深沟球轴承

深沟球轴承：深沟球轴承(静音)由一个外圈，一个内圈、一组钢球和一组保持架构成，除开式轴承之外，还有加钢板防尘盖的轴承，加橡胶盖的轴承，或者在外圈外径上带有止动环的轴承;其结构简单，使用方便，是生产最普遍，应用广泛的一类轴承。

工作特性：深沟球轴承主要承受径向载荷，也可同时承受径向载荷和轴向载荷。当其仅承受径向载荷时，接触角为零。当深沟球轴承具有较大的径向游隙时，具有角接触轴承的性能可承受较大的轴向载荷，深沟球轴承的摩擦系数很小，极限转速也很高。适用于高转速、低噪音、低振动的场合。

- 轴承类型：**
- 1、单列深沟球轴承
 - 2、带防尘盖的单列深沟球轴承
 - 3、带防尘盖、密封圈的单列深沟球轴承
 - 4、外圈上有止动槽及止动环的单列深沟球轴承
 - 5、有装球缺口的深沟球轴承
 - 6、双列深沟球轴承

Deep groove ball bearings: Deep groove ball bearing (silent) is composed of an outer ring, an inner ring, a group of steel balls and a group of cages. In addition to the open type bearing, there are also bearings with steel shields, bearings with rubber seals, or bearings with snap rings on the outer diameter of the outer ring; It's the most commonly produced and widely used type of bearing because of its simple structure and convenient use.

Working characteristics: Deep groove ball bearing mainly bears radial load, and can also bear radial load and axial load at the same time. When it only bears radial load, the contact angle is zero. When the deep groove ball bearing has a large radial clearance, the performance of the angular contact bearing can withstand a large axial load, the friction coefficient of the deep groove ball bearing is very small, and the limiting speed is also very high. Suitable for high speed, low noise, and low vibration situations.

- Bearing type:**
1. Single row deep groove ball bearing
 2. Single row deep groove ball bearing with dust cover
 3. Single row deep groove ball bearing with dust cover and sealing ring
 4. Single-row deep groove ball bearings with a stop groove and stop ring on the outer ring
 5. Deep groove ball bearing with ball filling gap
 6. Double row deep groove ball bearings

Thrust ball bearings 推力球轴承

推力球轴承：推力球轴承由一系列钢球（带保持架）、一个轴圈（与轴紧配合）和一个座（与轴有间隙而与轴承座孔紧配合）组成，钢球在轴圈和座圈之间旋转。只能承受一个方向的轴向载荷，不能承受径向载荷。由于轴向载荷是均匀地分布在每个钢球上，故载荷能力较大；但工作时，温升较大，允许极限转速较低。推力球轴承不能限制轴或外壳的径向移动，但可限制轴和外壳一个方向的轴向移动，因此，此类轴承通常与深沟球轴承联合使用。

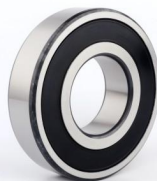
产品特点：属可分离型轴承，接触角 90° ，可以分别安装，只能承受轴向负荷。极限转速低。钢球加离心力挤向滚道外侧，易于擦伤，但不适于高速运转。单向轴承可承受单向轴向负荷，双向轴承可承受双向轴向负荷。带球面座圈的推力球轴承具有调心性能，可消除安装误差的影响。

轴承类型：推力球轴承分为:推力球轴承又分为推力球轴承、推力角接触球轴承、推力角接触球轴承

Thrust ball bearings: The thrust ball bearing consists of a row of steel balls (with a cage), a shaft ring (with a tight fit with the shaft) and a seat (with a gap with the shaft and a tight fit with the bearing seat hole), and the steel ball rotates between the shaft ring and the seat ring. It can only withstand axial loads in one direction and cannot withstand radial loads. Because the axial load is evenly distributed on each steel ball, the load capacity is large; However, when working, the temperature rise is large, and the allowable limit speed is low. Thrust ball bearings cannot limit the radial movement of the shaft or housing, but can limit the axial movement of the shaft and housing in one direction, so such bearings are usually used in combination with deep groove ball bearings.

Product features: It is a separable bearing with a contact Angle of 90° , which can be installed separately and can only withstand axial load. Low limit speed. The steel ball is squeezed to the outside of the raceway by centrifugal force, which is easy to scratch, but not suitable for high-speed operation. One-way bearings can withstand one-way axial load, and two-way bearings can withstand two-way axial load. The thrust ball bearing with spherical seat ring has aligning performance, which can eliminate the influence of installation error.

Bearing type: Thrust ball bearings are divided into: thrust ball bearings are divided into thrust ball bearings, thrust angular contact ball bearings, thrust angular contact ball bearings



Tapered roller bearings 圆锥滚子轴承

圆锥滚子轴承：圆锥滚子轴承的设计为，内圈、外圈的滚道面及滚子圆锥顶点聚于轴承中心轴上的一点，径向载荷作用于轴承，则产生轴向分力。因此，须将2个轴承对向使用，或作为成对双联轴承、双列轴承使用。高承载的HR系列中，基本代号标有J的轴承，其外圈宽度、外圈滚道小端面直径以及接触角与ISO之规定一致。

产品特点：圆锥滚子轴承主要用于承受以径向载荷为主的径向与轴向联合载荷。与角接触球轴承相比，承载能力大，极限转速低。圆锥滚子轴承能够承受一个方向的轴向载荷，能够限制轴或外壳一个方向的轴向位移。

轴承类型：根据所装滚子的列数，圆锥滚子轴承分为单列、双列和四列等不同的结构型式。其中，单列圆锥滚子轴承的应用最为广泛，其承受轴向负荷的能力取决于接触角，即外圈滚道角度，角度越大，轴向负荷能力也越大。双列圆锥滚子轴承的外圈（或内圈）是一个整体，游隙是通过调整隔圈的厚薄来实现的。

Tapered roller bearings: The design of tapered roller bearings is that the raceway surface of the inner ring and the cone of the roller are gathered at a point on the central axis of the bearing, and the radial load acts on the bearing, resulting in an axial component force. Therefore, the two bearings must be used in opposite directions, or as a pair of double bearings, double row bearings. In the high-load HR series, the bearing with the basic code J, the outer ring width, the small end diameter of the outer ring raceway and the contact Angle are consistent with the ISO regulations.

Product features: Tapered roller bearings are mainly used to bear radial and axial combined loads based on radial loads. Compared with angular contact ball bearings, the bearing capacity is large and the limit speed is low. Tapered roller bearings can withstand axial loads in one direction, and can limit the axial displacement of the shaft or housing in one direction.

Bearing type: According to the number of rows of rollers installed, tapered roller bearings are divided into single row, double row and four row and other different structural types. Among them, single-row tapered roller bearings are the most widely used, and their ability to withstand axial load depends on the contact Angle, that is, the Angle of the outer ring raceway, the greater the Angle, the greater the axial load capacity. The outer ring (or inner ring) of a double-row tapered roller bearing is a whole, and the clearance is achieved by adjusting the thickness of the spacer ring.



Spherical roller bearings 调心滚子轴承

调心滚子轴承：调心滚子轴承是内圈有两列滚道，外圈为球面滚道，滚动体为鼓形的轴承。外圈滚道面中心与轴承中心一致，内圈两条滚道相对轴承轴向倾斜成一定角度，轴承可自动调心，因而不受轴与轴箱体对准误差或轴弯曲的影响。除承受径向载荷外，轴承还能承受一定的双向轴向载荷，适用于承受振动，冲击载荷的场合。

产品特点：调心滚子轴承装有大量长而对称的大直径滚子，能够承受集中载荷。滚道的特殊结构以及滚道表面的最佳品质保证了调心滚子轴承，CC及CA型轴承具有最小的摩擦。与传统的调心滚子轴承相比，这些轴承的运行温度较低，能够承受较重的轴向载荷，或可达较高速度。

轴承类型：CC及EC型设计：此类轴承具有对称滚子带有冲压钢板保持架。导圈由内圈定心。EC型轴承采用加强型滚子，从而提高载荷能力。CC型轴承滚子和滚道表面光洁度经优化加工，有助于滚子引导，并可减少摩擦。CA及ECA型设计：此类轴承具有对称滚子，内圈有挡边。导圈在两列滚子中间，从内圈定心。保持架为一体式黄铜或钢制机刷架。CA及ECA型采用C型式的表面加工，ECA型带有加强滚子，从而提高承载能力。

Spherical Roller Bearings: Spherical roller bearings are bearings with two rows of raceways on the inner ring, spherical raceways on the outer ring, and drum shaped rolling elements. The center of the outer ring raceway surface is consistent with the center of the bearing, and the two raceways of the inner ring are inclined at an angle relative to the axial direction of the bearing. The bearing can automatically adjust its center, so it is not easily affected by alignment errors between the shaft and the axle box seat or shaft bending. In addition to bearing radial loads, bearings can also withstand certain bidirectional axial loads, suitable for bearing vibration and impact loads.

Product features: Spherical roller bearings are equipped with a large number of long and symmetrical large diameter rollers, which can withstand concentrated loads. The special structure of the raceway and the optimal quality of the raceway surface ensure that the self-aligning roller bearings, CC and CA type bearings have the minimum friction. Compared with traditional self-aligning roller bearings, these bearings have lower operating temperatures, can withstand heavier axial loads, or can reach higher speeds.

Bearing type: CC and EC type design: This type of bearing has symmetrical rollers with stamped steel plate cages. The guide ring is centered by the inner ring. EC type bearings use reinforced rollers to improve load capacity. The surface smoothness of the CC type bearing rollers and raceways has been optimized, which helps guide the rollers and reduces friction. CA and ECA type designs: These types of bearings have symmetrical rollers and inner rings with retaining edges. The guide ring is located between the two rows of rollers and is centered from the inner ring. The retainer is an integrated brass or steel machining frame. CA and ECA models adopt C-type surface processing, while ECA models have reinforced rollers to improve load-bearing capacity.



我们的产品 OUR PRODUCTS



合作客户
COOPERATIVE CUSTOMER



冶金行业主要客户



机械行业主要客户

